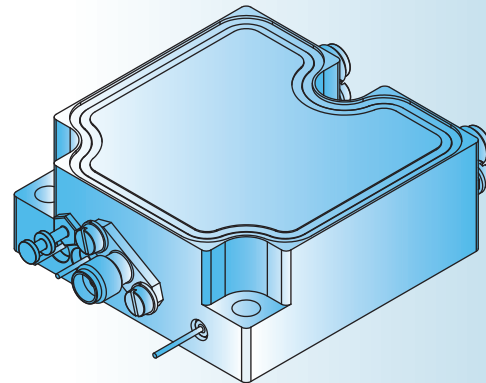
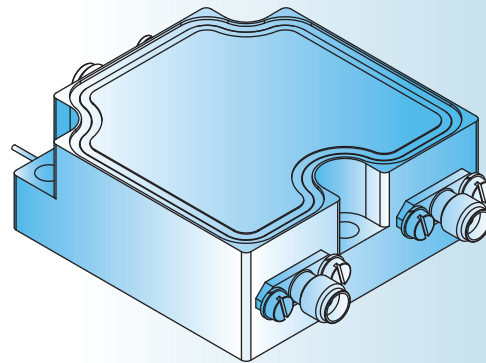
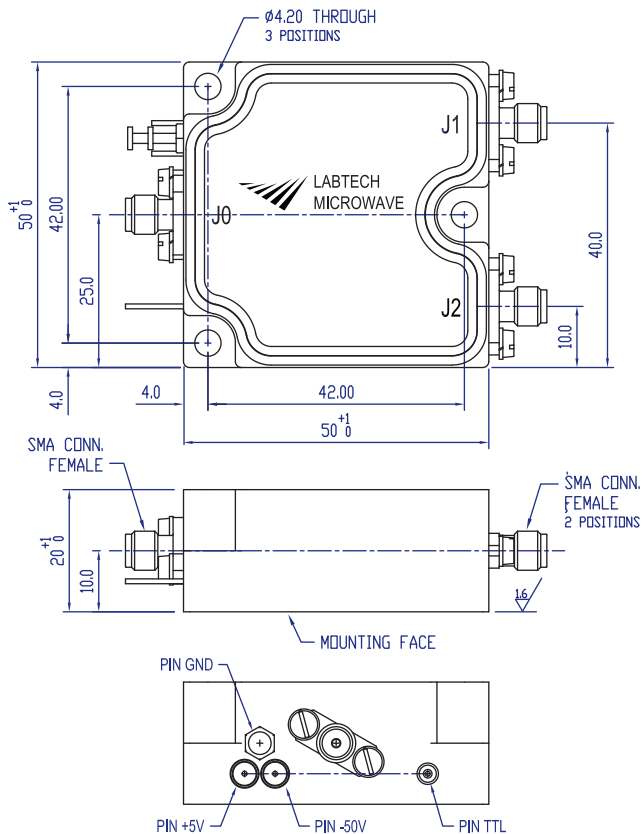


LMS902

High power SPDT switch

The LMS902 operates in the IFF microwave range from 1 to 1.1GHz and has the ability to switch signals of up to 500 Watts peak in 1 microsecond. In addition the unit provides 45dB isolation and only 0.8dB insertion loss.



SPECIFICATIONS	TYPICAL VALUES
Frequency range	1 to 1.1 GHz
Insertion loss	0.8dB (max)
Return loss	15dB (min)
Isolation	45dB (min)
Switching speed	1 microsecond (max)
Operating power (peak)	500W (max)
Logic control	Single TTL line
Power supplies	+5V @ 300mA -50V @ 50mA
Connectors	SMA Female ²

NOTES

1. LMS902 has been designed for harsh environments.
2. Connector options are available.
3. Other 10% band widths are available.

design
assembly
manufacturing
testing

Labtech Microwave
8 Vincent Avenue
Crownhill
Milton Keynes
MK8 0AB
UK

Tel: +44 (0)1908 261755
Fax: +44 (0)1908 261788

www.labtechmicrowave.com
sales@labtech.ltd.uk